



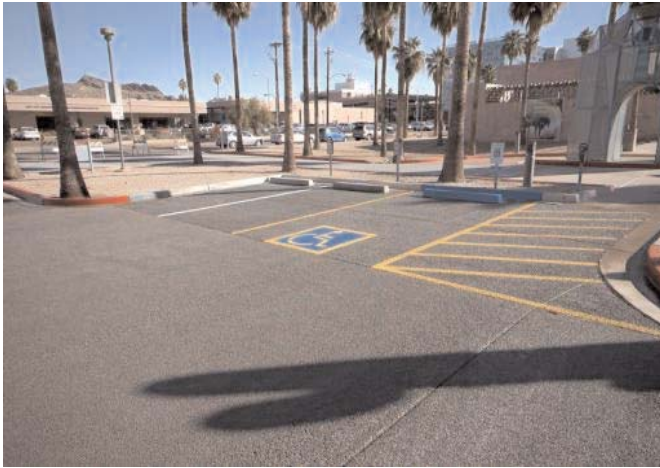
Progressive Concrete Works, Inc.

2136 W. Melinda Ln.
Phoenix, AZ 85027
(623)582-2274
www.progressiveconcrete.com

Your Architectural Concrete Experts
Serving Arizona since 1954



PCW Pervious Concrete - Pervious concrete is a durable concrete with a “no fines” mix design. This mix design allows for a 15-30% void structure, which will allow 3-8 gallons of water, per square foot, per minute, to pass through it. The flow of water and air through the slab makes it an important element in the growing sustainable construction movement. This paving material is recognized by the U.S. Environmental Protection Agency for its positive impact with water-pollution control, storm water management, safety, reducing the negative impact of urban heat islands, and for allowing trees and other plant life to flourish even in areas of intensive land development.



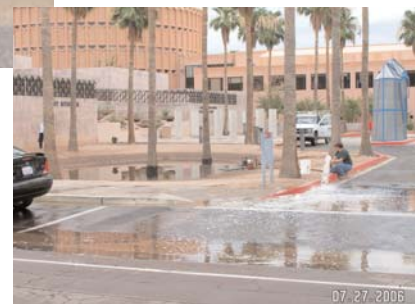
Pervious concrete is also recognized by the U.S. Green Building Council’s Leadership in Energy and Environmental Design program for enabling integration of paving and drainage that allows for a smaller development footprint on land sites by reducing the amount of land needed to manage storm water.

Pollution Control: Conventional impervious pavements, particularly parking lots and streets, collect oil, anti-freeze, and other automobile fluids that can be washed into streams, rivers, lakes, and oceans during rains. Pervious concrete eliminates water pollution through natural biological processes. As water infiltrates the soil beneath the pavement, larger pollutants are filtered out and microorganisms break down pollutants until they are inert.



Pollutants from vehicles

Storm water being pumped out of retention basin



Effective Land Use - Pervious Concrete can reduce the need for retention basins and expensive storage retention systems, thereby allowing for more effective land use.

Recharging ground water aquifers - Instead of diverting water to a storm water drainage system, infiltrating water will eventually reach aquifers to help replenish them.



Urban climate control - By absorbing and storing less heat, it reduces the heat build-up and heat radiation produced by conventional asphalt and concrete pavements. The added air circulation allows cooler Earth temperatures to migrate up, helping to reduce surface temperatures.

Improving Tree Health - By improving the access of air and water to root systems, trees that surround pervious concrete parking lots have been shown to live longer and grow wider than trees in areas with impervious pavements.

Safety - Pervious concrete reduces the potential for vehicles hydroplaning and causing drivers to lose control by preventing standing water from pooling on paved surfaces.



Progressive Concrete Works Inc.

Is the only concrete subcontractor in Arizona that has NRMCA certified crews. The goal of this certification program is to ensure that knowledgeable contractors are selected to place pervious concrete, thereby minimizing the chance for failure.

We would love the opportunity to meet with you personally or to provide a luncheon presentation for you and your staff. Our facility has over 3,000 SF of pervious concrete as well as a large variety of other hardscape concrete samples. We are always happy to schedule appointments that will accommodate both you and your clients. Additional brochures, specifications and information are only a phone call away, at 623-582-2274, or visit our web site at www.ProgressiveConcrete.com.